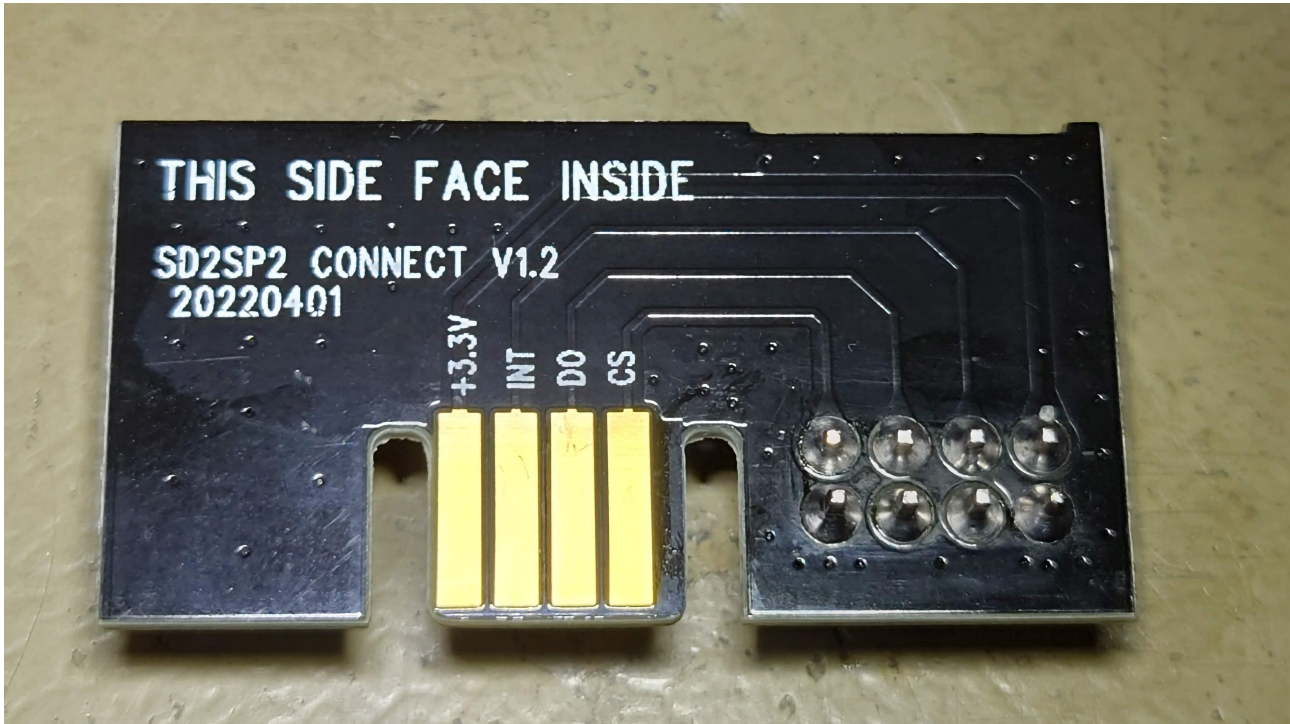
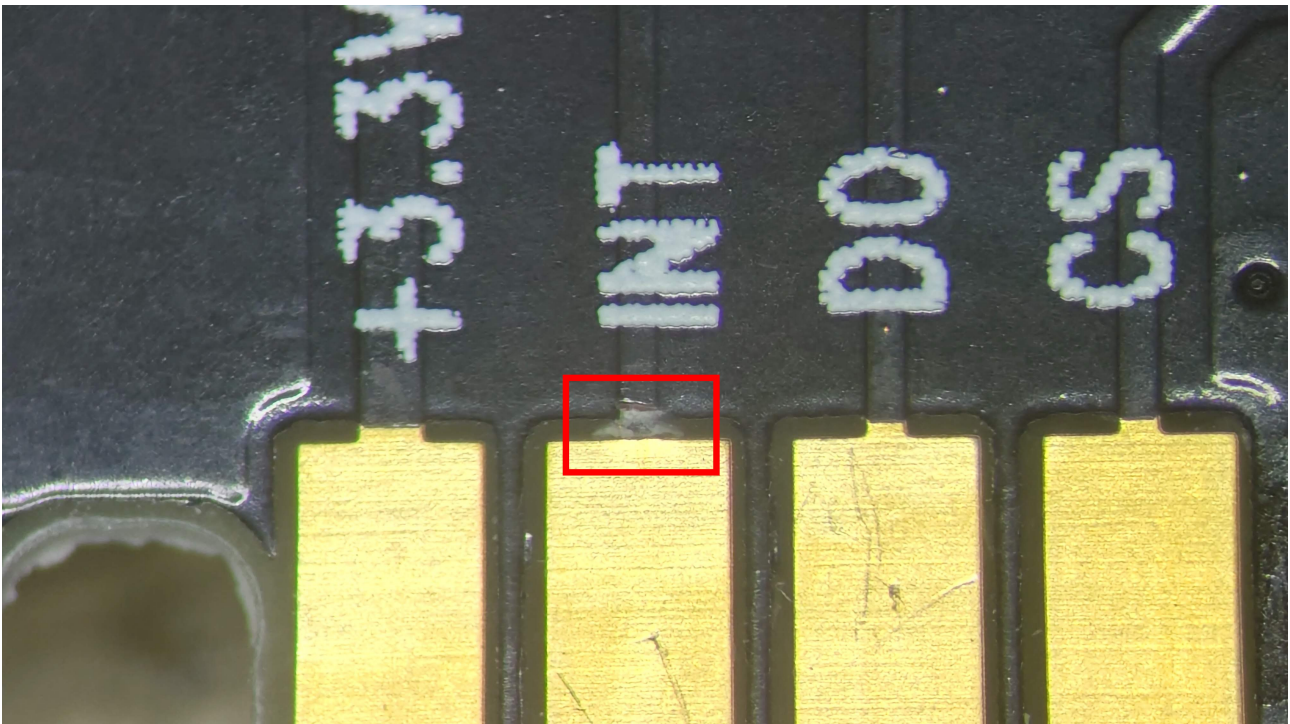


# Modifying SD2SP2 PRO to SD2SP2 PRO 2.0

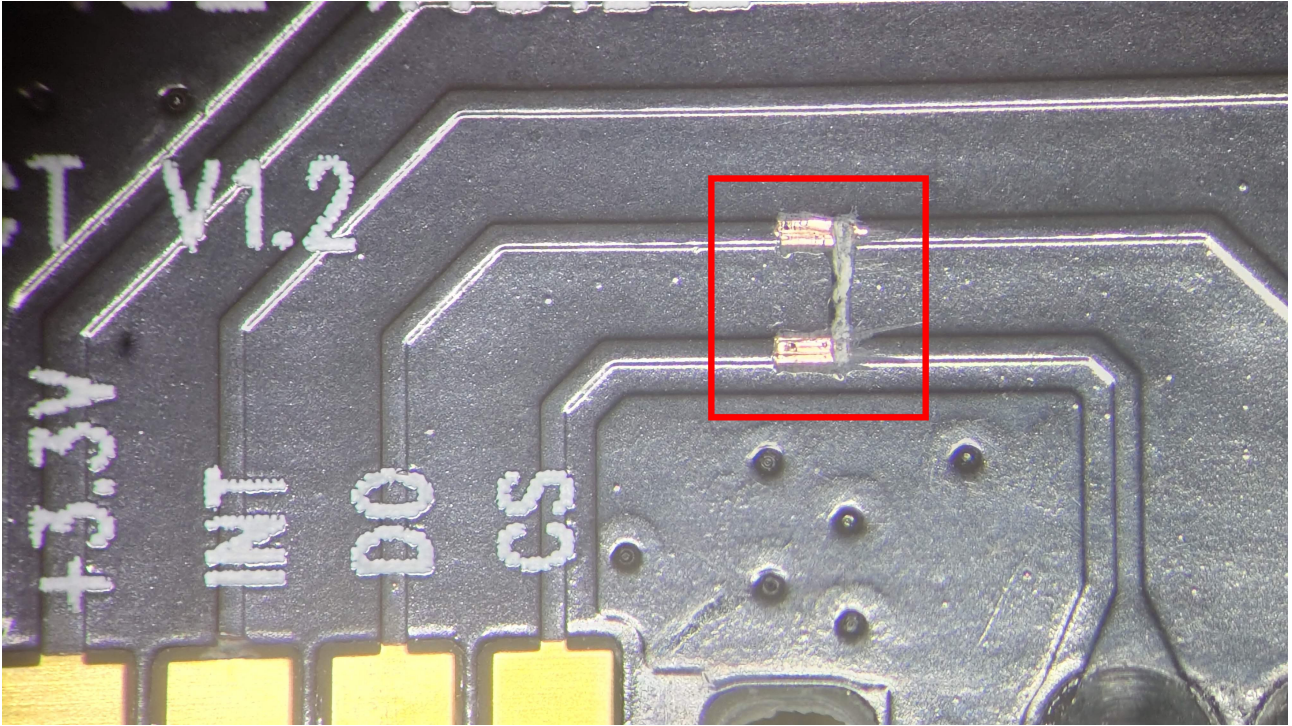


We are only modifying the board going into the SP2 slot, the upper SD card board is left untouched.

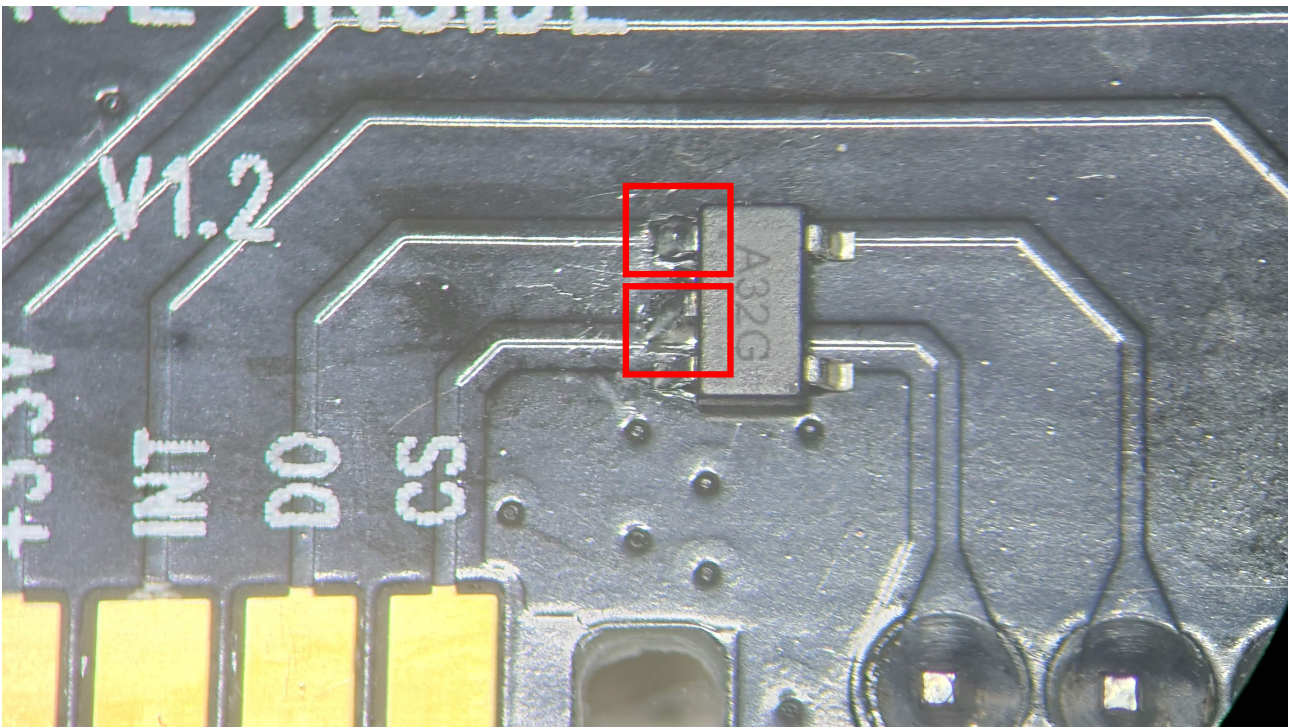


First cut the INT trace, this one is no longer connected.



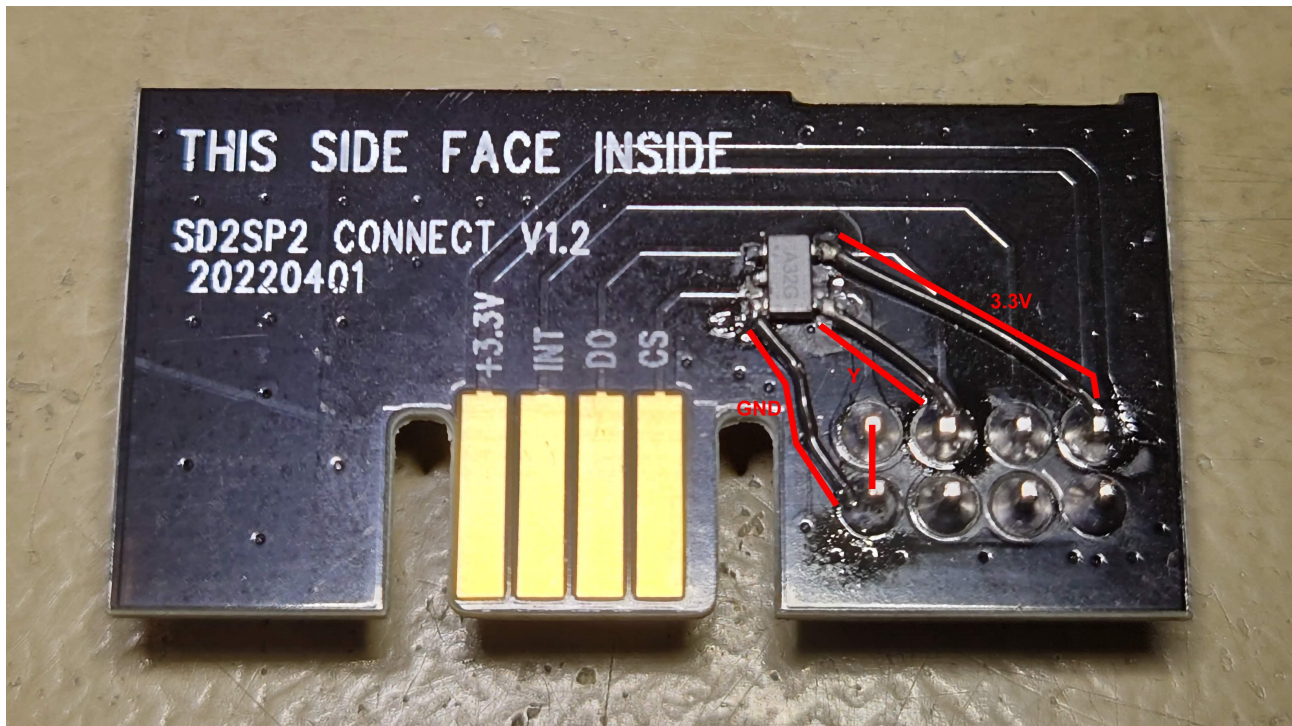


Then cut the DO and CS trace, scrape and tin the traces from those on the side going to the edge connector.



Then solder in the SN74AHC1G32 pin 1 and 2 on DO and CS on the tinned side.





Then solder from SN74AHC1G32 pin 3 to GND, pin 5 to 3.3V, pin 4 to Y (old DO), and the last step is bridging GND and old CS.

\*As it's only the cut end of the traces of DO and CS holding this component down a little conformal coating on this is recommended.

\* Remember to use Swiss v0.6r1666 or later for this mod to run at full potential.

\* SD2SP2 2.0 (note not PRO/POR) have DO and DI switched on the silkscreen, but not the traces.